

PLUS: ROUNDABOUTS • PREVENTIVE MAINTENANCE

TME

TRANSPORTATION MANAGEMENT & ENGINEERING®

WWW.TMEMAG.COM

A SCRANTON GILLETTE COMMUNICATIONS MAGAZINE
A SUPPLEMENT TO **ROADS&BRIDGES** MAGAZINE



G

etting
the
Message

Communicating during
construction, congestion and crisis



Product Portfolio

LOTS OF PROGRESS

Transoft Solutions Inc., developers of advanced applications for the engineering and architectural design community, has announced the latest version of its parking lot design software, ParkCAD 3.0.

Proven in tests to be over 70% faster than traditional design methods, architects, drafters and engineers can design, test and edit parking lots in minutes for improved parking-needs analysis and to quickly evaluate scenarios to maximize parking yield. ParkCAD 3.0 functions within both AutoCAD and MicroStation platforms.

So how will this new release improve the way parking lots have been traditionally designed? Michael Frost, product manager at Transoft Solutions, addressed this subject: "Our newly defined SmartL.O.T process delivers a combination of functional abilities such as dynamic lot editing, site setup and automatically updated lot parameters to help with what designers need a parking lot to be: pedestrian friendly, traffic flow accommodating, functional and easily maintainable for a minimal cost."

When asked about some of the stand-out features in ParkCAD 3.0, Frost replied, "In the past year, there's been a profound move towards overall responsibility for costs with many design consultants. Therefore, in my opinion, the most significant enhancement is the new Quantity Takeoff Reporting feature which provides parking object quantities with cost estimates that can be dynamically tied to the geometric design."

"ParkCAD 3.0 lets the user become more competitive by allowing them to concentrate on the important design jobs that bring the revenue in and not having to waste time laying out different parking lot configurations," Frost concluded.

ParkCAD 3.0 enhancements include the following:

Powerful reporting capabilities

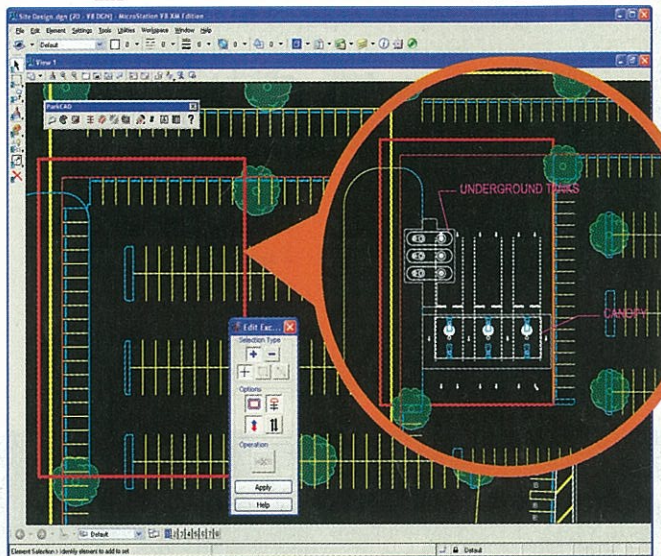
- Quantity Takeoff Reporting details linear footage areas and quantities of parking objects (islands, stalls, etc.) with costs assigned for estimates. For example, designers can specify the amount of paint needed to be laid down for a given stall and then generate a cost report based on parking stalls painted on a per area basis.
- Stall Count Reporting is enhanced reporting to include quantities and percentages of standard, accessibility and user-defined stalls.

Improved parking-needs analysis

- SmartL.O.T applies to the design process users can employ to test various parking-area scenarios and configurations for parking-needs analysis before generating and finalizing layouts. This will ensure maximum parking capacity in the available areas while accounting for convenience and safety factors.

Increased efficiency

- Accessibility Parking includes Accessibility Standards (ADA) allowing for percentage requirement calculations and stalls placed with ISA symbol and access aisles.
- A heads-up display creates dynamically updated parking stall counts, allowing users to determine optimal row alignments to maximize parking



yield.

- The software comes complete with parking guidelines (from ITE, ULI, AIA and other governing bodies) in an easily accessible database.

Dynamic editing abilities

- Existing lots can be updated to match ongoing changes to boundary geometry.
- Users can specify areas where no parking should be generated, making the software ideal for structures, drive aisles, landscape areas and entrance and exit placements.
- Users can create custom stall standards and assign symbols and colors for specially designated user-defined stalls.

Transoft Solutions Inc.
604/244-8387
www.transoftsolutions.com